

- Rehabilitation of 89km of last mile feeder roads
- 100 Wards with improved water supply and sanitation facilities
- 100 Village business units/community gardens

Activities

2.1 Participatory ward-level infrastructure investment planning

- Meetings with community leadership at ward level (Exploratory visits) to compile a long list and possible locations for community infrastructure needs
- Meetings with ward members i.e. at least 50% of the HHs from the Ward Unit (initial dialogue meetings) beneficiaries will discuss and agree with SACP on the shortlist priority interventions for the community

2.2 Climate proofed Infrastructure Investment

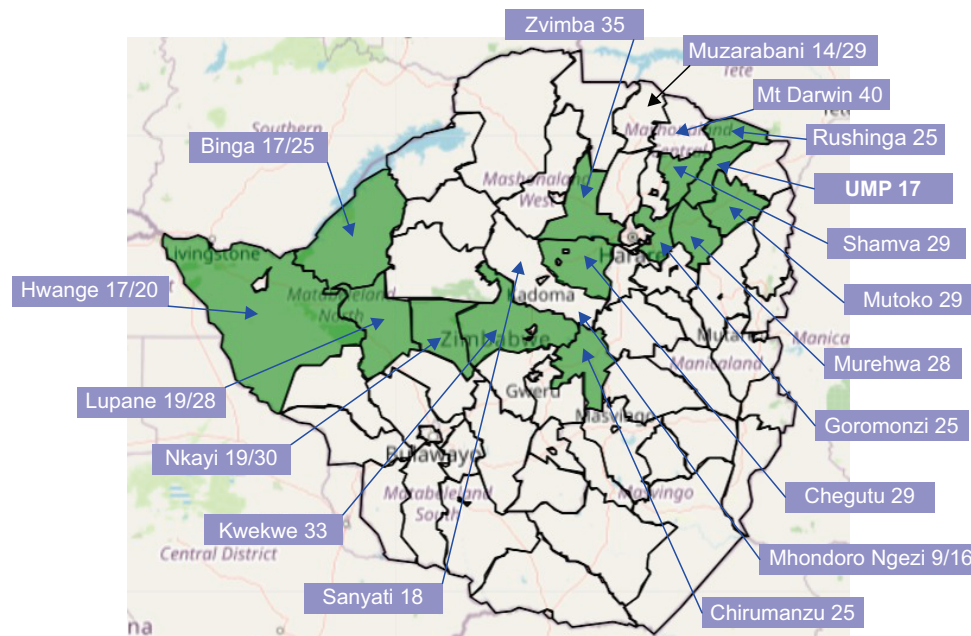
- Undertake feasibility studies for selected priority investments in infrastructure-irrigation, feeder roads and water supply and sanitation
- Agree on the Terms of partnership with implementing partners and other relevant stakeholders in the various activities and fix community contribution and responsibility.
- Implementation of Construction Activities, monitoring, commissioning and handover.

Component 3 - Institutional Support and Project Coordination

- 3.1 Support for policy implementation
- 3.2 Demand driven solutions for smallholder value chain development
- Implementation of one stop shop approach for full range of agriculture SME public support services
- Operationalisation of the horticultural development policy
- Convene district, provincial and national level policy dialogues
- Mapping workshop with APGs, MSEs, Value Chain Lead Enterprises and farmer associations
- Participatory development of policy briefs on contract farming, farmer group registration mechanism, food loss and food waste reduction policies



SMALLHOLDER AGRICULTURE CLUSTER PROJECT (SACP)



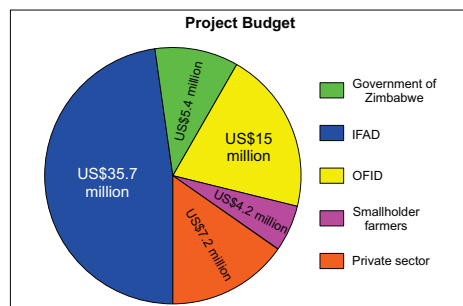
Project Period

November 2021- December 2027

Project Goal - Increased household incomes and nutrition through sustainable transformation of the smallholder farming sector

Project objectives

Increased smallholder participation in market oriented and climate smart value chains



Beneficiary Category

Households
Agriculture Producer Groups
Micro, Small and Medium Enterprises
Value Chain Lead Enterprises

Project Target

78 240
800
200
40

Project will be implemented using a whole of Government approach involving agencies and departments such as RDA, ZINWA, DOI, Ministries

SACP Components

Key Activities

Component 1- Inclusive Value Chain Development

1.1 Cluster Identification and Value Chain Mobilisation

- Call for Expressions of Interest
- Ward Level awareness meetings
- Agriculture Producer Group (APG) and Medium and Small Enterprises (MSE) screening
- Beneficiary Registration

- Conduct Market Study

1.2 Capacity Building

- Training for APGs and SMEs on Business Development Skills, Financial Literacy, Group Governance, Business Development Skills, Climate Smart Agriculture
- Roll out of Gender Action Learning Systems

1.3 Financing for Value Chain Development

- Applications for matching grants
- Application for disbursement of loans
- Implementation of value chain upgrading activities
- Monitor Performance of value chain

Eligible Value Chains

- Poultry, Goats, Pork, Beef, Dairy, Traditional Grains, Horticulture.

Targeting

- APG composition should be minimum 30 members, of which 50% women and 30% youths
- Maximum 20% of category A (Households with little or no land, not economically active, below poverty line)
- Minimum 70% of group member fall under category B1 (poor households with access to land, livestock and labour. 1 economically active person. Cash and resource constrained to purchase inputs and commodities. Below total consumption) and B2 emerging Small Holder farmers with land and labour, cash constrained and vulnerable to shocks. 2-3 economically active people. Potential to increase productivity to achieve food and income security)
- Maximum 10% of group members fall under category C.
- Land size - Average size per farmers in relation to value chain of each group member should be less than 6 hectares.
- Beneficiaries will be eligible to apply for matching grants as APGs or MSEs.

Component 2 - Climate Proofed Value Chain Infrastructure

Project Targets

- 1,780 hectares or Irrigation Schemes rehabilitated